



Oregon Environmental Restoration Council Meeting

Oregon Parks and Recreation Department

Andrea Hanson – Central Operations Resource Manager

Agency Mission & Goals



OPRD Mission: To provide and protect outstanding natural, scenic, cultural, historic, and recreational sites for the enjoyment and education of present and future generations.

Vision: To take the long view to protect Oregon's special places and provide the greatest experience while creating stable future funding.

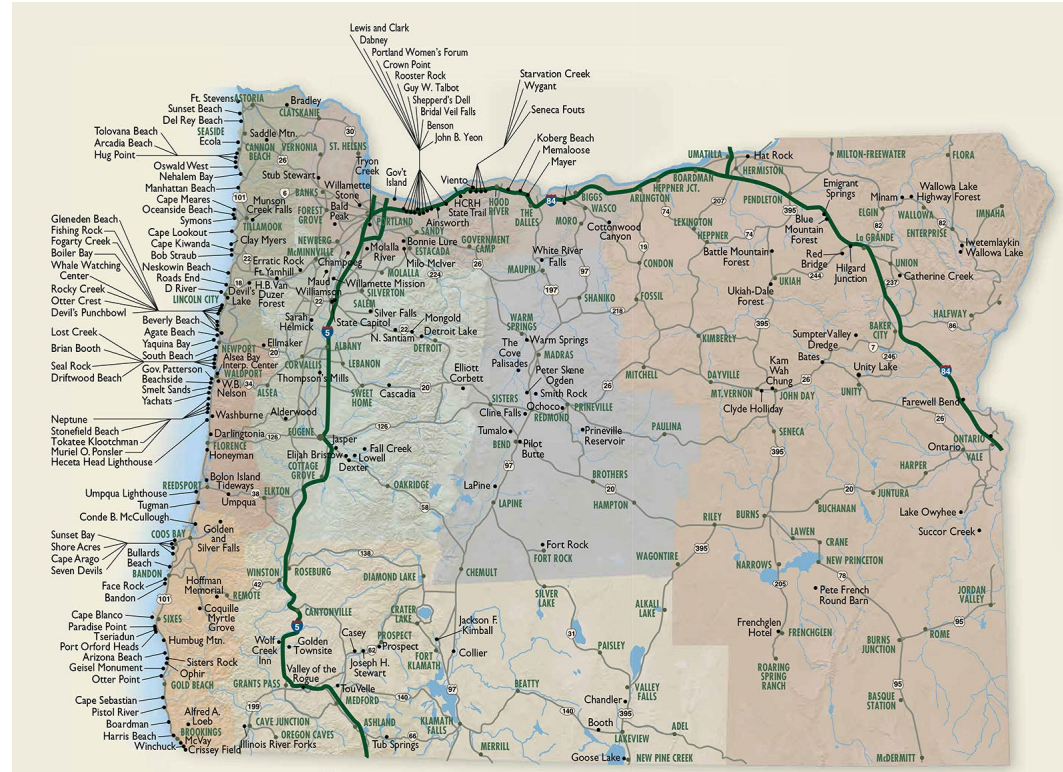


Agency Overview



OPRD Manages:

- 360 parks/properties across the state
- 134,000+ acres of land
- 362 miles of coastline – Ocean Shores
- 1,200 river miles – State Scenic Waterways
- 53M day-use visitors per year
- 2.9M camping sites booked per year
- Rec Grants: \$133M to 200+ communities
- Oregon Heritage Grants: \$20M to 171 communities





Agency Budget

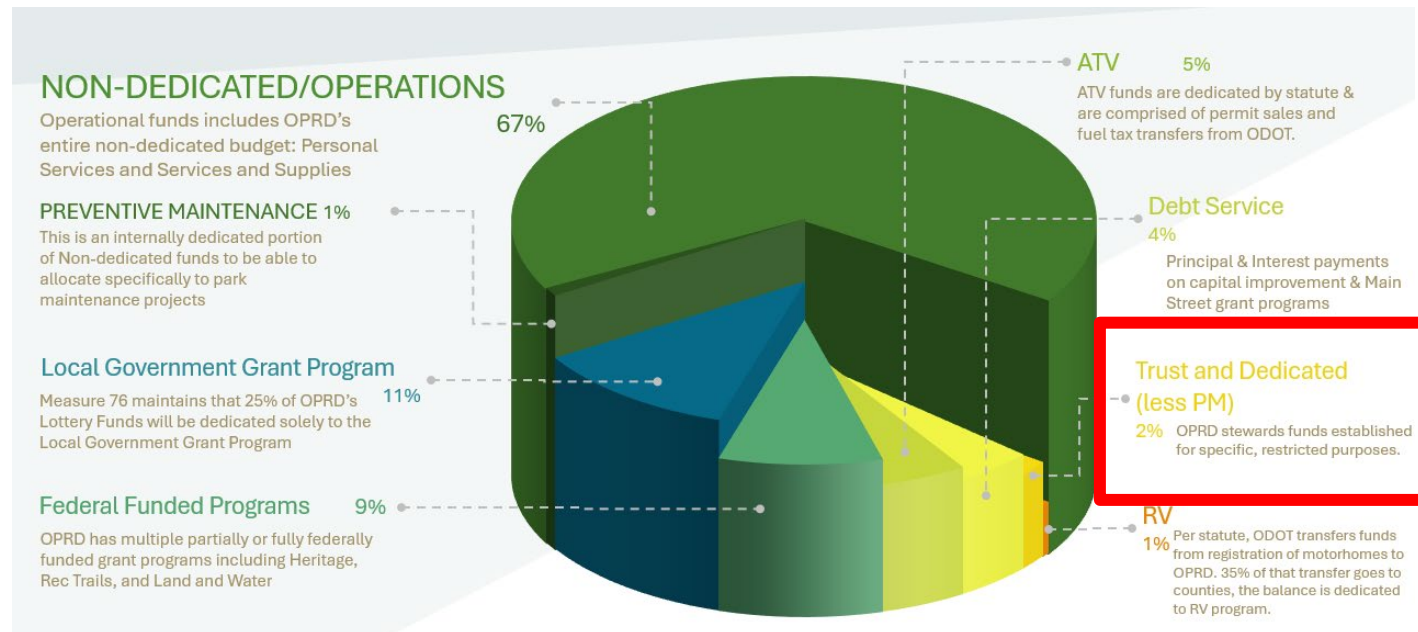
25-27 Revenue Funds: \$478M



- Other Funds
- Lottery Funds
- Federal Funds
- General Funds

- No dedicated tax dollars
- Stewardship: <2% budget

25-27 ARB Revenue Destination



Agency/Settlement Overlap



Key Areas of Overlap:

- Restoring, maintaining, and enhancing the quality of Oregon's air, land, water, and other natural resources
- Restoration and protection of fish, wildlife, and their habitats
- Remediation of impaired waterbodies, sediments, or soil

Shared Goals:

Habitat restoration and protection for:

- Conserving fish & wildlife populations and their critical habitats
- Improving water quality & quantity
- Mitigating high-severity wildfire
- Connecting key habitats
- Assisting bioremediation
- Removing debris and contamination sources
- Improving air quality and carbon sequestration
- Building natural resource climate resiliency
- Restoring ecosystem functions



Agency/Settlement Overlap

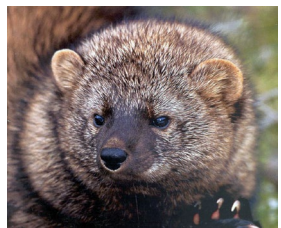
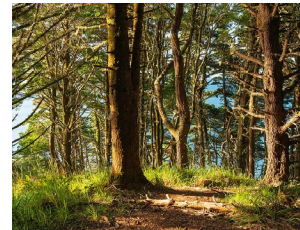


OPRD Manages:

- 134,000+ acres
- 362 miles of ocean shore
- 145+ diverse habitat types

Mixed Conifer	Wetland	Meadows	Beaches
Ponderosa Pine	Riparian	Wet Prairie	Dunes
Oak Woodland	Streams/Rivers	Tidal Marsh	Sagebrush
Aspen Stands	Reservoir/Lakes	Estuary	Shrub-steppe

- 600+ species observed in State Parks:
 - Species of Greatest Conservation Need - Fish, Mammals, Birds, Amphibians, Invertebrates



Agency Funding Needs



Natural Resource Programs: Underfunded, limiting natural resource restoration efforts

- Habitat Restoration Program/Project Examples:

- Forest and Woodland
- Wetland and Riparian
- Oak Prairie and Meadows
- Estuary and Coastal Dune



- Monitoring and Conservation of Critical Species on State Park Lands

- Marine Debris Removal and Beach Remediation

- Invasive Species Management for Ecosystem Health

- Planning Efforts:

- Natural Resource Strategic Action Plans
- Oregon State Natural Areas Program



Agency Funding Needs



Forest and Woodland Restoration (example):

- *Habitats*: Late successional mixed conifer forests, ponderosa pine, oak, aspen
- *Goals*: Improve forest health, provide critical species habitat, conserve connectivity, reduce the severity of wildfire, improve air quality, and build climate resiliency
- *Methods*:
 - thin dense stands and overgrown understories
 - create fish and wildlife habitat features
 - utilize controlled burns when appropriate
 - conduct post-disturbance restoration activities
 - remove invasive species
 - restore native plant communities
- *Key SGCN Species*:
 - Chinook, Coho, Steelhead, Fisher, Ringtail, Spotted Owl, Marbled Murrelet, Coastal Tailed Frog, Del Norte Salamander, Clouded Salamander
- *Funding*:
 - Contracts, equipment, plants, project administration



Agency Funding Needs



Wetland and Riparian Restoration (example):

- *Habitats:* Wetlands, sloughs, marshes, vernal pools. Habitats adjacent to flowing water (deciduous/conifer trees, shrubs, grasses)
- *Goals:* Provide critical species habitat, improve water quality & quantity, promote bioremediation, recharge aquifers, moderate stream temperatures, sequester carbon, and reduce flooding events
- *Methods:*
 - remove invasive species
 - replant with climate resilient native species
 - reestablish habitat connectivity
 - improve hydrological processes
 - implement protective measures
- *Key SGCN Species:*
 - Cutthroat/Bull/Redband Trout, Coho/Chinook Salmon, Greater Sandhill Crane, Oregon Spotted Frog, Clouded Salamander, Western Toad, Western Painted/Pond Turtle
- *Funding:*
 - Contracts, equipment, plants, permits, project design and administration

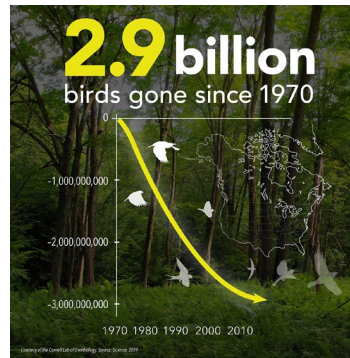


Agency Funding Needs



Monitoring and Conservation of Critical Species on State Park Lands (example):

- *Issue:* Data on at-risk species is limited in Oregon, including in State Parks
- *Goals:* Collect data on what critical species are using our parks, and what State Parks can do to help reverse declines in Oregon's fish & wildlife populations
- *Methods:*
 - establish a species monitoring program
 - track population trends
 - research species limiting factors
 - implement targeted efforts to increase populations of critical species on State Park lands
- *Funding:*
 - Contracts, equipment, data analysis, project administration

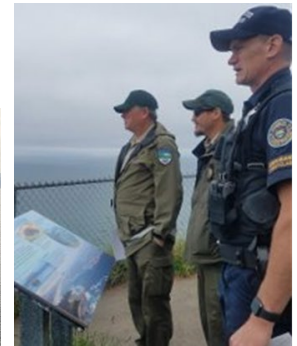


Agency Funding Needs



Marine Debris Removal and Beach Remediation (example):

- *Issue:* Funding is needed for expansive, hazardous, and/or dangerous emergency marine debris response and removal for Oregon's beaches, dunes, and rocky shores
- *Goal:* To have an immediate, coordinated emergency marine debris response to prevent severe damage to sensitive ecosystems and human safety on the Ocean Shore
- *Methods:*
 - large-scale equipment to collect and remove debris
 - specialized equipment and trained personnel for dangerous or complex clean-up
 - coordination with state and federal partners
 - habitat conservation and restoration actions to mitigate impacts
- *Key SGCN Species:*
 - Western Snowy Plover, Tufted Puffin, Brown Pelican, Humpback Whale, Orca, Bull Kelp
- *Funding:*
 - Contracts (removal & restoration), equipment, project administration

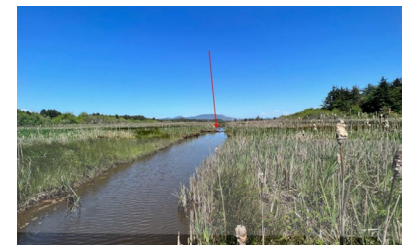


Example Projects



Sitka Sedge State Natural Area - Estuarine Restoration and Community Resiliency

- *Issue:* In Sand Lake Estuary, a 1930s dike is actively failing, is a fish barrier, and is degrading water quality through limitation of natural tidal action and flooding of road contaminants into the estuary
- *Goals:*
 - Build a setback dike at the end of the estuary
 - Allow restoration of estuarine processes to 68 acres of land formerly cut off from the estuary
 - Provide estuarine habitat to critical fish and wildlife species
 - Restore full, unfettered fish passage to two historic salmon streams
 - Eliminate frequent flooding of the road that contaminates the estuary with runoff
 - Improve water quality and promote bioremediation
- *Progress:*
 - 100% designs and permits are anticipated by Fall 2026
 - Diverse and strong partnerships developed (agencies, businesses, NGOs, the Confederated Tribes of the Siletz Indians)
- *Funding:* \$4M for restoration contract (already has \$6M in federal match)

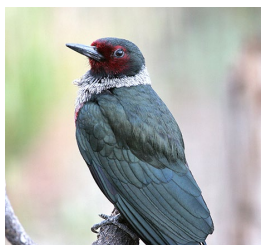


Example Projects



Protecting Oregon from Sudden Oak Death (SOD) – Humbug Mountain State Park

- *Issue:* SOD is a disease caused by a non-native invasive pathogen that has only been detected in Curry County in Oregon. It causes the rapid death of oak trees, decimating oak habitats that are critical to many species of conservation concern, and creates a fire prone landscapes.
- *Goal:* Help to reduce the spread of SOD in Oregon and conserve oak habitats
- *Methods:*
 - Treat 85+ acres of infected oak habitat at Humbug Mountain SP
 - Cut, pile, and burn infected wood
 - Monitor for new infections and conduct a rapid response
 - Restore oak habitats
- *Key SGCN Species:*
 - Lewis's Woodpecker, Western Bluebird, White-breasted Nuthatch, Western Gray Squirrel
- *Funding:* Contracts, equipment, plants, project administration

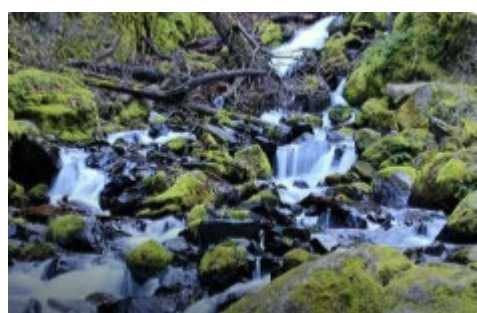


Funding Outcomes



Funding Benefits & Outcomes:

- Considerable beneficial impact on land, air, water, and species across Oregon
- Significant improvements to State Park natural resources
- Outstanding success stories for OPRD and OERF reports
- Extensive engagement with Oregonians and diverse communities
- Highly visible projects for community outreach on the OERF
- Funding will fill critical funding gaps, not replace existing dollars



Questions?



Mockup for demonstration/inspiration purposes only

Andrea Hanson – Central Operation Resource Manager

Andrea.Hanson@opr Oregon.gov

Agency Organization



Commission
Appointed by Gov., confirmed by Senate

Director
Lisa Sumption
Stefanie Coons (interim)

**Deputy Director
Operations**
Dennis Comfort

Direct Services:
State Park Experiences
Field Operations: Coastal, Mountain, and
Valleys Regions

**Deputy Director
Field & Community Services**
Matt Rippee

Park Operations:
Park Resources
Park Improvement
Safety & Risk
Real Estate

Community Support:
Heritage Grants
Recreational Grants
State Historic Preservation Office

**Deputy Director
Central Business Services**
JR Collier

Central Services:
Administration, Financial Services,
Communications, HR, Information services,
Internal audits, Procurement, Govt relations,
and Policy